

Bengali Indic Input 2 - User Guide

Contents

WHAT IS BENGALI INDIC INPUT 2?	3
SYSTEM REQUIREMENTS	3
TO INSTALL BENGALI INDIC INPUT 2	3
<i>To Use Bengali Indic Input 2</i>	4
SUPPORTED KEYBOARDS	5
BENGALI TRANSLITERATION	5
<i>Keyboard Rules</i>	5
ASSAMESE TRANSLITERATION	7
<i>Keyboard Rules</i>	7
BENGALI INSCRIPT	11
BENGALI TYPEWRITER 1	11
BENGALI TYPEWRITER 2	12
TOOL SETTING OPTIONS	23
ON-THE-FLY HELP	23
SHOW KEYBOARD	23
SWITCH TO ENGLISH/BENGALI	24
HELP	24
TROUBLESHOOTING	25
TO UNINSTALL BENGALI INDIC INPUT 2	26

What is Bengali Indic Input 2?

Bengali Indic Input 2 provides a very convenient way of entering text in Bengali Language using the English QWERTY keyboard in any editing application (Office Application/WordPad /Notepad) that supports Text. Bengali Indic Input 2 tool will be packaged as a setup and running the setup will invoke the services. The tool supports all popular keyboard layouts.

System Requirements

Windows Vista

Windows 7

*Tool is compatible with equivalent 64-bit Operating Systems mentioned above.

To Install Bengali Indic Input 2

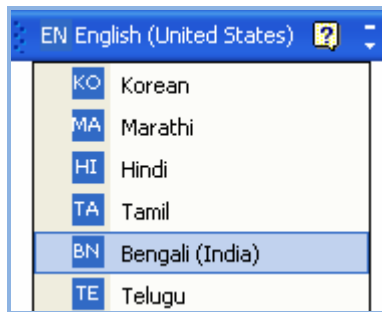
Installation of the Bengali Indic Input 2 is a very easy process that takes less than two minute to complete.

Run or double click **Bengali Indic Input 2 Setup**. The setup wizard will guide you through the installation process. Once the installation process is complete, **Bengali Indic Input 2 has been successfully installed** will be displayed.

Note: On Windows Vista and Windows 7, if your user login does not have administrative privileges or is not included in the user group of administrators right click the "Setup.exe" icon and select "Run as Administrator".

To Use Bengali Indic Input 2

1. Start any Office application, including WordPad or Notepad.
2. Click the Language Indicator located in the System Tray on the right side of the Windows taskbar or on Language bar as shown below and select **BN-Bengali (India)**.



3. Select **Bengali Indic Input 2** from the shortcut menu that appears. The PC is now ready to start typing in Bengali.

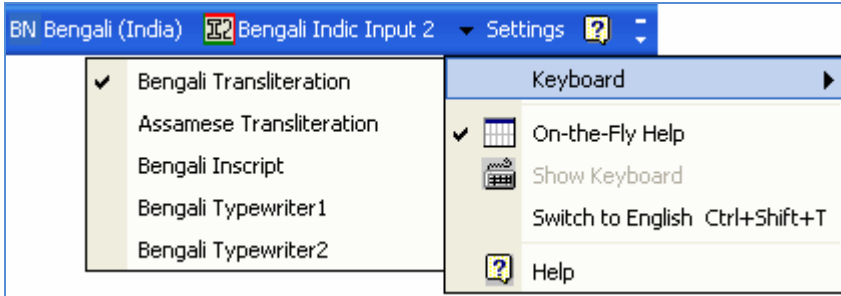


Note:

- If you are unable to view Language bar on your PC [Click Here](#).

Supported Keyboards

Bengali Indic Input 2 supports various types of Keyboards. Click **Settings** Icon and select **Keyboard**. Choose keyboard layout of your choice from list of available keyboards.



Bengali Transliteration

User can type his message in Roman using the Standard English keyboard, which is transliterated on-the-fly to Bengali. It works on the logic of phonetics and is most effective when user write the word the way it is spoken.

Keyboard Rules

Vyanjan (Consonants)									
ক	ka,ca,qa	খ	kha	গ	ga	ঘ	gha	ঙ	Nga
চ	cha	ছ	chha	জ	ja	ঝ	jha,z a	ঞ	Nja
ট	Ta	ঠ	Tha	ড	Da	ঢ	Dha	ণ	Na
ত	ta	থ	tha	দ	da	ধ	dha	ন	na
প	pa	ফ	pha,fa	ব	ba	ভ	bha	ম	ma
য	ya,wa	ৰ	ra	ল	la	শ	sha	ষ	Sha
স	sa	হ	ha	ক্ষ	ksha,X	ত্ক	tka		

Swar (Vowels)									
অ	a	আ	aa	ই	i	ঈ	ee,ii,I	উ	u
ঊ	oo,uu,U	ঋ	Ra	এ	e	ঐ	ai	ও	o
ঔ	au	অং	a^	অঃ	aH	অঁ	aM		

Example:

Input	Output
aamio	আমিও
eky	ঐক্য

Matras

া	aa	ি	i	ী	ee,ii,l	ু	u	ূ	oo,uu
্	R	ে	e	ৈ	ai,ei	ো	o	ৌ	au,ou

Example:

Input	Output
koumudi	কৌমুদি
moohoort	মুহূর্ত

Anuswara, Visarga and Chandrabindi

ং	^	ঃ	H	ঁ	M
---	---	---	---	---	---

Example:

Input	Output
faa^shana	ফাংশন
duHkh	দুঃখ
chaaMda	চাঁদ

Conjuncts

দ্য	dy	ক্ত	kt	দ্ধ	ddh	ক্র	kr	র্ক	rk
ক্ট	kT	শু	shu	চ্চ	chch	গু	ND	ক্ষ	ks

Example:

Input	Output
mukt	মুক্ত
krama	ক্রম

Nukta Consonants

য়	Ya	ড়	D_a	ঢ়	Dh_a
----	----	----	-----	----	------

Example:

Input	Output
joD_aa	জোড়া
dRaDh_a	দূঢ়

Explicit Halant Example:

Input	Output
faaTak_	ফাটক্
filma_	ফিল্ম্

Explicit Half Consonants Example:

Input	Output
Aal_haamid	আল্‌হামিদ
Mah_muda	মহ্‌মুদ

Special Combinations

If capital 'M' or capital 'H' or caret '^' appear after conso, vowel or matra map them to 'chandrabindi', 'visarga' or 'anuswar'.

Exceptional Case: If capital 'M' or capital 'H' come at the start of a word it should be interpreted as small case 'm' and 'h'.

If 'R' is followed by 'i', 'a' or 'u', ignore matra as 'R' stands for Ra(Rishi).

RiShi ঋষি

If 'n' is followed by a consonant, replace it with anuswar. Exceptional cases: 'ny' ("n" followed by y), nm ("n" followed by "m") and nn (na followed by na).

Character '~' rule facilitates occurrence of explicit halant and prevents the formation of conjuncts

mah_muda মহ্‌মুদ

Character '_' (underscore) can be used to generate explicit half consonants and preventing the formation of conjuncts.

nish~chaY নিশ্‌চয়

Words ending with a consonant and "a" will be treated as ending with "aa" matra. An exception to this rule is conjuncts appearing at the end of the word with an "a".

oTha ওঠা

A rule

A অ্যা

'ng' Rule: If the User press 'n' and then 'g' then it will become 'anuswar'.

ebang এবং

To type Roman Numerals (Numbers), use the Numpad Keys of the Keyboard with Caps Lock Key ON.

1, 2, 3,...9, 0.

To type Lingual Numerals (Numbers), use the Numpad Keys of the Keyboard with Caps Lock Key OFF.

০, ১, ২, ৩, ৪, ৫, ৬, ৭, ৮, ৯

Assamese Transliteration

In Bengali Indic Input 2, Assamese Transliteration keyboard is available for Windows XP only. For Vista and above, a separate Assamese Indic Input 2 is available for download.

Keyboard Rules**Vyanjan (Consonants)**

ক	ka,ca,qa	খ	kha	গ	ga	ঘ	gha	ঙ	Nga
চ	cha	ছ	chha	জ	ja	ঝ	jha,z a	ঞ	Nja

ট	Ta	ঠ	Tha	ড	Da	ঢ	Dha	ণ	Na
ত	ta	থ	tha	দ	da	ধ	dha	ন	na
প	pa	ফ	pha,fa	ব	ba	ভ	bha	ম	ma
য	ya,wa	র	ra	ল	la	শ	sha	ষ	Sha
স	sa	হ	ha	ক্ষ	ksha,X	ত্ক	tka		

Swar (Vowels)

অ	a	আ	aa	ই	i	ঈ	ee,ii,l	উ	u
ঊ	oo,uu,U	ঋ	Ra	এ	e	ঐ	ai	ও	o
ঔ	au	অং	a^	অঃ	aH	অঁ	aM		

Example:

Input	Output
ikaraa	ইকরা
eraala	এরালা

Matras

া	aa	ি	i	ী	ee,ii,l	ু	u	ূ	oo,uu
্	R	ে	e	ৈ	ai,ei	ো	o	ৌ	au,ou

Example:

Input	Output
khiD_ikee	খিড়িকী
juburiYaa	জুবুরিয়া

Anuswara, Visarga and Chandrabindi

ং	^	ঃ	H	ঁ	M
---	---	---	---	---	---

Example:

Input	Output
P^kaja	পংকজ
aantHs^yoga	আন্তঃসংযোগ
keMchaai	কেঁচাই

Conjuncts

দ্য	dy	ক্ত	kt	দ্ধ	ddh	ক্র	kr	র্ক	rk
ক্ট	kT	শু	shu	চ্চ	chch	ও	ND	ক্ষ	ks

Example:

Input	Output
biShNu	বিশু
peNjchana	পেঞ্জন

Nukta Consonants

য়	Ya	ড়	D_a	ঢ়	Dh_a
----	----	----	-----	----	------

Example:

Input	Output
paDh_aa	পঢ়া
jaD_ataa	জড়তা

Explicit Halant Example:

Input	Output
Tap~TapeeYaa	টপটপীয়া
Dhek~Dhekaa	ঢেক্ঢেকা

Explicit Half Consonants Example:

Input	Output
Aal_haamid	আল্হামিদ
Mah_muda	মহ্মুদ

Special Combinations

If capital 'M' or capital 'H' or caret '^' appear after conso, vowel or matra map them to 'chandrabindi', ' visarga ' or 'anuswar'.

Exceptional Case: If capital 'M' or capital 'H' come at the start of a word it should be interpreted as small case 'm' and 'h'.

If 'R' is followed by 'i', 'a' or 'u', ignore matra as 'R' stands for Ra(Rishi).

RiShi

ঋষি

If 'n' is followed by a consonant, replace it with anuswar. Exceptional cases: 'ny' ("n" followed by y), nm ("n" followed by "m") and nn (na followed by na).

Character '~' rule facilitates occurrence of explicit halant and prevents the formation of conjuncts

Mah_muda

মহ্মুদ

Character '_' (underscore) can be used to generate explicit half consonants and preventing the formation of conjuncts.

nish~chaY

নিশ্চয়

Words ending with a consonant and "a" will be treated as ending with "aa" matra. An exception to this rule is conjuncts appearing at the end of the word with an "a".

oTha

ওঠা

A rule

A

অ্যা

'ng' Rule: If the User press 'n' and then 'g' then it will become 'anuswar'.

ebang

এবং

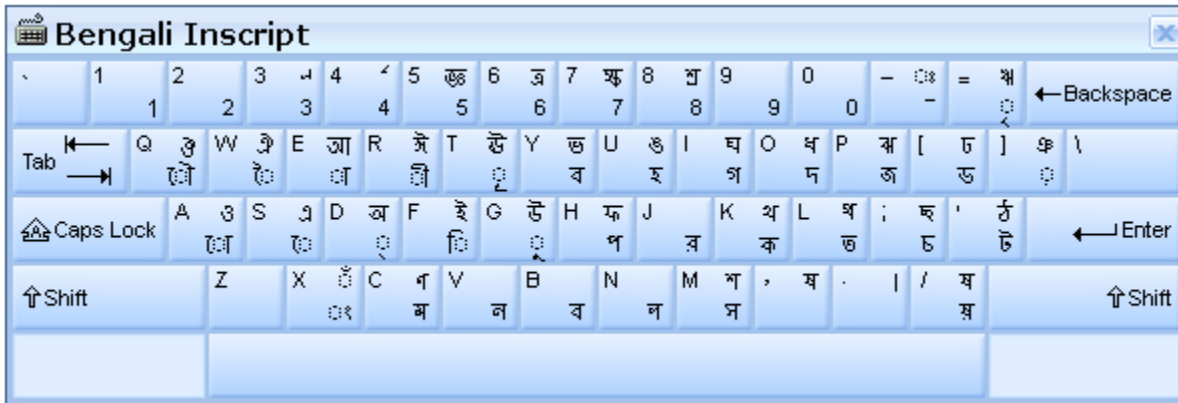
To type Roman Numerals (Numbers), use the Numpad Keys of the Keyboard with Caps Lock Key ON.

1, 2, 3,...9, 0.

To type Lingual Numerals (Numbers), use the Numpad Keys of the Keyboard with Caps Lock Key OFF.

০, ১, ২, ৩, ৪,
৫, ৬, ৭, ৮, ৯

Bengali Inscript



Special Rules

consoA + halant(d) + consoB = conjunct

ক + ং + য = ক্ষ

consoA + halant(d) + Ctrl+Shift+1 + consoB = disjoint conjunct

ক + ং + CtrlShift 1 + য = ক্ষ্

consoA + halant(d) + Ctrl+Shift+2 + consoB = disjoint conjunct

ক + ং + CtrlShift 2 + য = ক্ষ

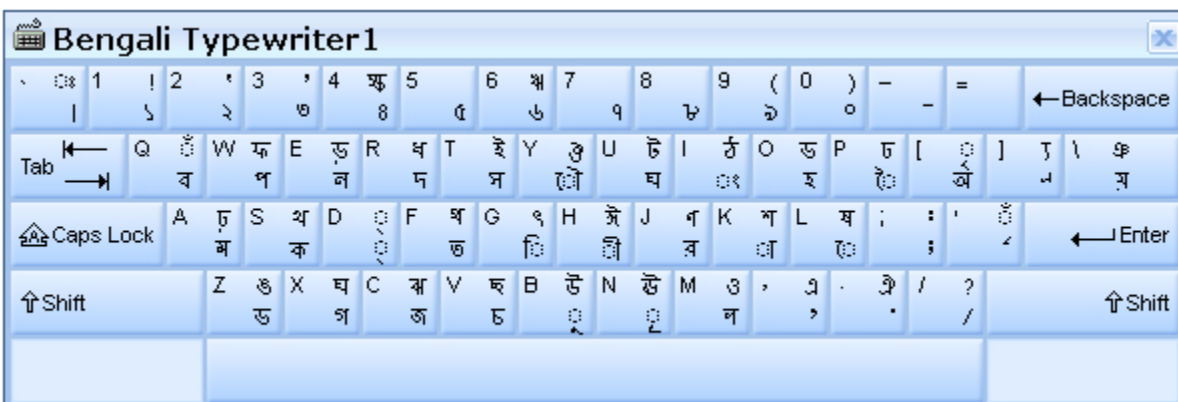
To type Roman Numerals (Numbers), use the Numpad Keys of the Keyboard with Caps Lock Key ON.

1, 2, 3, ..., 9, 0.

To type Lingual Numerals (Numbers), use the Numpad Keys of the Keyboard with Caps Lock Key OFF.

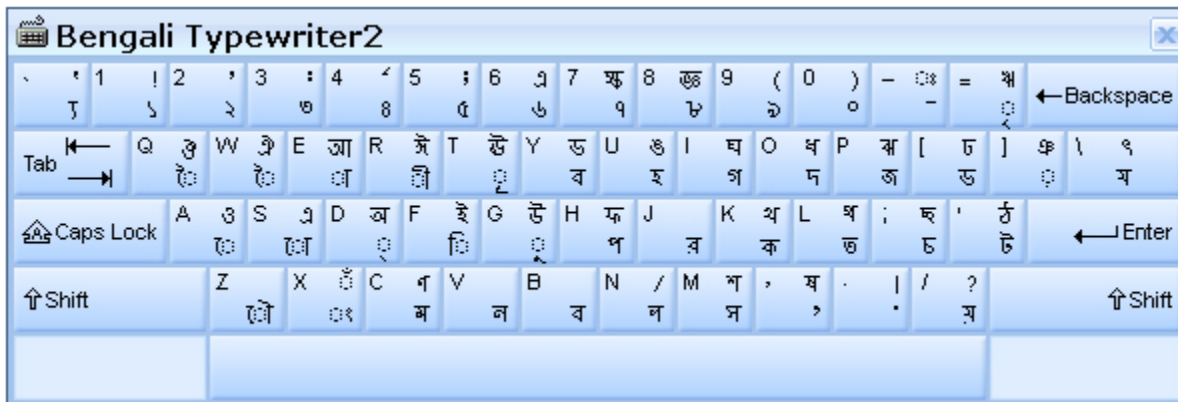
০, ১, ২, ৩, ৪, ৫, ৬, ৭, ৮, ৯

Bengali Typewriter 1



Special Rules	
If 'a' vowel is followed by 'aa' matra create 'aa' vowel.	অ + aa Matra = আ
To type Roman Numerals (Numbers), use the Numpad Keys of the Keyboard with Caps Lock Key ON.	1, 2, 3,...9, 0.
To type Lingual Numerals (Numbers), use the Numpad Keys of the Keyboard with Caps Lock Key OFF.	০, ১, ২, ৩, ৪, ৫, ৬, ৭, ৮, ৯
Reph is typed after a consonant or conjunct.	ক + reph = কঁ কি + reph = ক়ি ক্ + reph = ক্

Bengali Typewriter 2



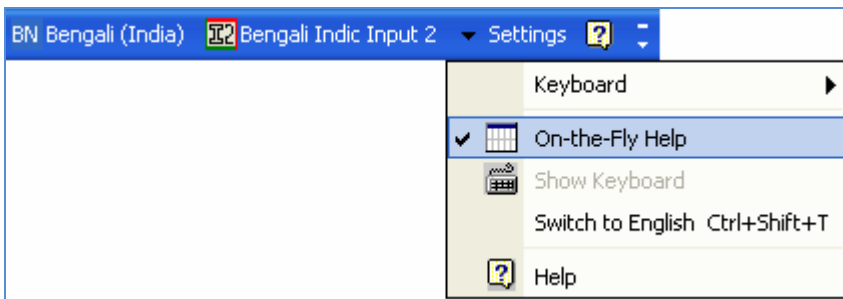
Special Rules	
To type Roman Numerals (Numbers), use the Numpad Keys of the Keyboard with Caps Lock Key ON.	1, 2, 3,...9, 0.
To type Lingual Numerals (Numbers), use the Numpad Keys of the Keyboard with Caps Lock Key OFF.	০, ১, ২, ৩, ৪, ৫, ৬, ৭, ৮, ৯
Reph is typed after a consonant or conjunct.	ক + reph = কঁ কি + reph = ক়ি ক্ + reph = ক্

Tool Setting Options

On-the-fly Help

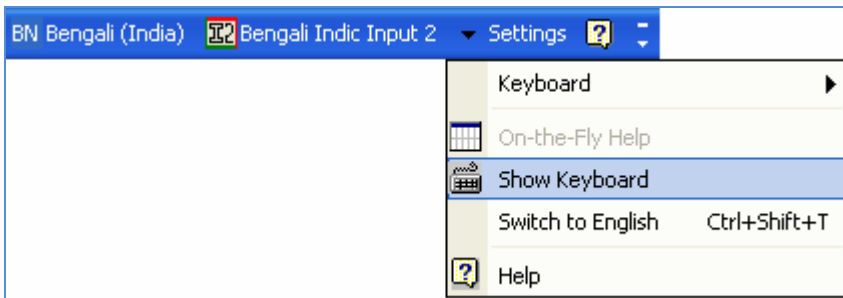
Tool provides the simplest way to type text by using on-the-fly Help. As the user starts typing using transliteration keyboard, he can see the respective letters in selected Indian Language with various matra combinations.

To activate this feature select **On-the-Fly Help** from **Settings** Menu.



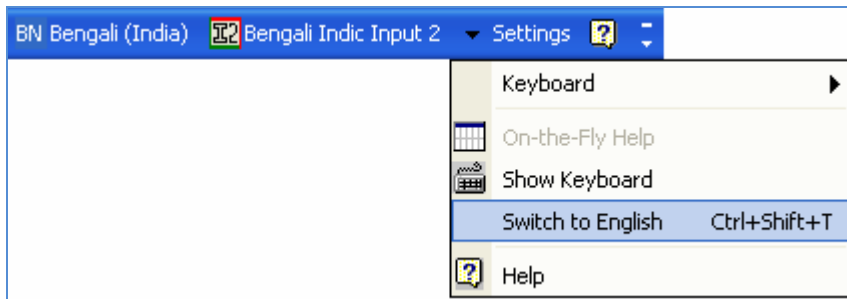
Show Keyboard

To view any keyboard (except Phonetic) select **Show Keyboard** option from **Settings** Menu

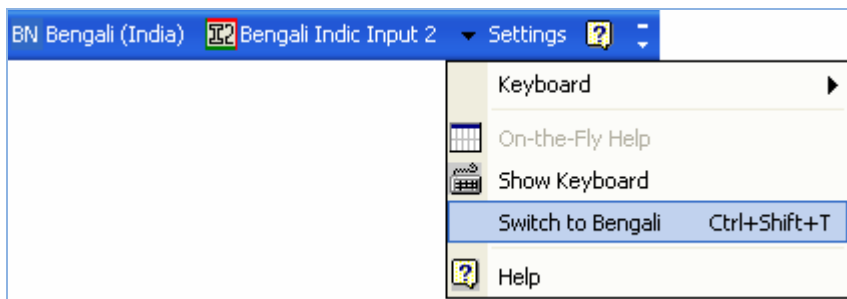


Switch to English/Bengali

To switch to English Language, select **Switch to English** option from **Settings** Menu or use shortcut key Ctrl+Shift+T.

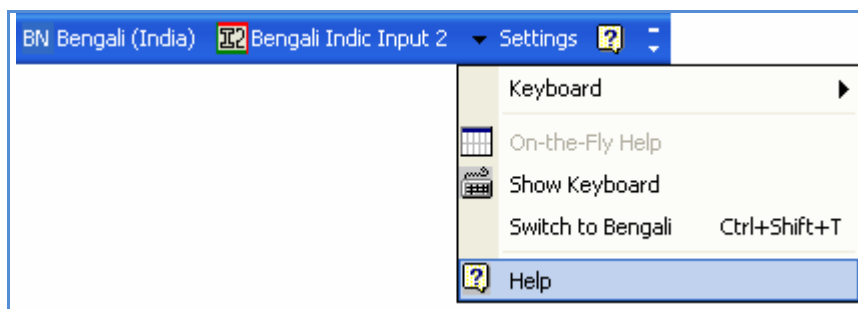


To switch to Bengali Language again, select **Switch to Bengali** option from **Settings** Menu or use shortcut key Ctrl+Shift+T.



Help

To view help on Bengali Indic Input 2 tool, select **Help** from **Settings** Menu.



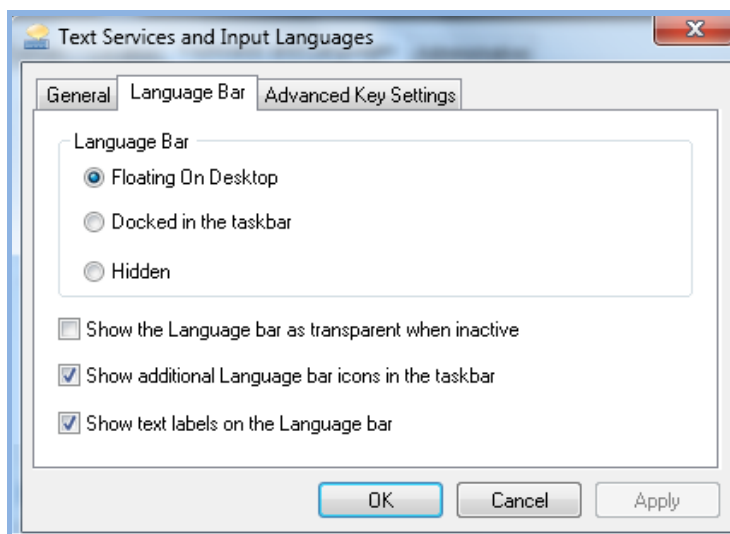
Troubleshooting

1. How can I make Language bar visible on my PC?

Right-click your Desktop taskbar, and point to **Toolbars**. See is **Language bar** selected, if not click on it to select. If Language bar is no longer listed in the toolbar menu try below steps:

VISTA/WINDOWS 7

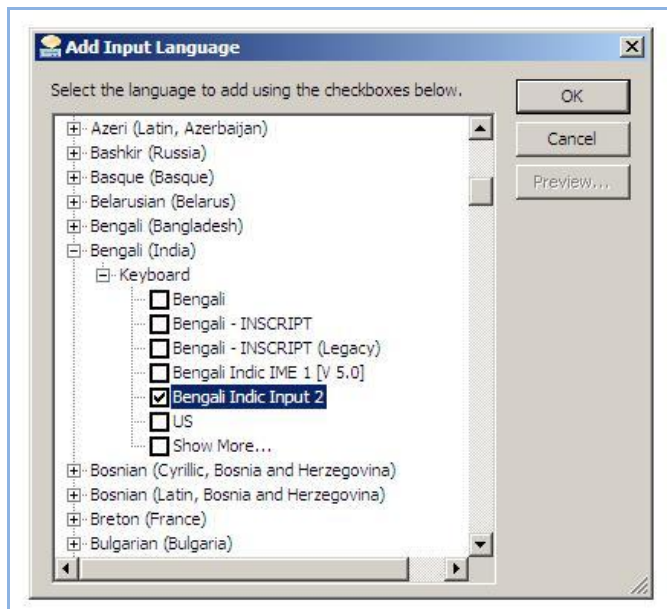
- Go to **Control Panel > Regional and Language Options > Keyboards and Languages (tab) > Change Keyboards > Language Bar**
- Select radio button **Floating on Desktop** or **Docked in the taskbar**.
- Click **OK**.



2. How can I add Bengali Indic Input 2 on my Language bar?

VISTA/WINDOWS 7

- Go to **Control Panel > Regional and Language Options > Keyboards and Languages (tab) > Change Keyboards > General**.
- Click **Add** button, Select the Language (Bengali) and under Keyboard section check the box titled **Bengali Indic Input 2**.
- Click **OK**.



3. I do not want Bengali Indic Input 2 as the default input method for my PC. What can be done?

VISTA/WINDOWS 7

- Go to **Control Panel > Regional and Language Options > Keyboards and Languages (tab) > Change Keyboards > General**

Check both:

- ✓ You have not selected Bengali as your **Default Input Language**.
- ✓ You have not selected Bengali Indic Input 2 as an input method in Language bar.

To Uninstall Bengali Indic Input 2

Follow the steps below to uninstall the tool.

1. Open Windows **Control Panel** → **Add/Remove Programs** to remove the program(s).
2. Select **Bengali Indic Input 2** and click **Remove** button.
3. You will be prompted by a confirmatory message. Select **Yes** to remove the tool completely.

Note: It is recommended to close all running applications before uninstalling the Bengali Indic Input 2 Tool.